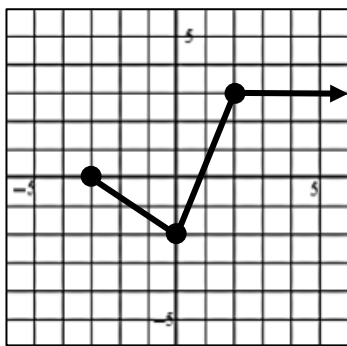
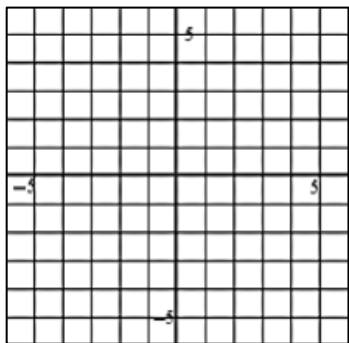


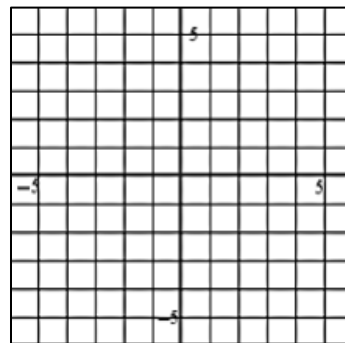
Using the given graph of $f(x)$, sketch a graph of each of the following transformed functions.



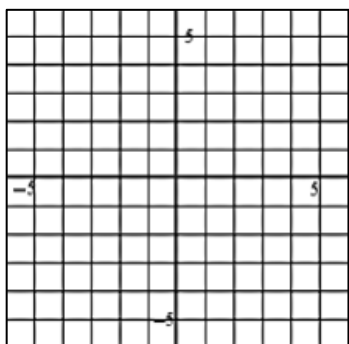
1) $y = f(2x)$



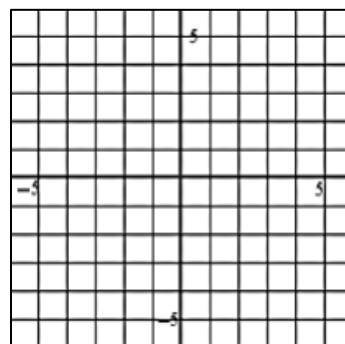
2) $y = -2f(x)$



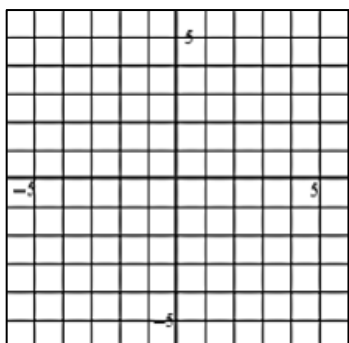
3) $y = \frac{1}{2}f(-x)$



4) $y = f\left(\frac{1}{2}x\right)$



5) $y = 2f\left(\frac{1}{3}x\right)$



6) $y = -\frac{2}{3}f(3x)$

